

Official Statistics
Game Nine
Laurel County vs. Clay County

30th Girls

OFFICIAL NCAA BASKETBALL BOX SCORE: *** FINAL ***

Date: 03-22-91 Site: Frankfort, Ky.

VISITORS (Last Name, First)

| NO. | CLAY COUNTY | Tot FG | | 3-POINT | | FT | FTA | Rebounds | | | PF | TP | A | TO | BLK | S | TIME |
|------------------------------------|----------------|--------|-----|---------|-----|----|-----|----------|-----|-----|----|----|----|----|-----|---|-------|
| | | FG | FGA | FG | FGA | | | OFF | DEF | TOT | | | | | | | |
| 44 | Howard, Angela | 3 | 5 | 0 | 0 | 1 | 3 | 0 | 2 | 2 | 5 | 7 | 2 | 2 | 0 | 0 | 30:45 |
| 52 | Brumley, Tonya | 2 | 11 | 0 | 0 | 2 | 6 | 6 | 6 | 12 | 2 | 6 | 1 | 0 | 1 | 3 | 31:51 |
| 50 | Jackson, Vonda | 4 | 9 | 0 | 0 | 1 | 2 | 5 | 1 | 6 | 4 | 9 | 0 | 1 | 1 | 0 | 21:22 |
| 21 | Dinsmore, Jen. | 2 | 7 | 2 | 6 | 1 | 2 | 0 | 4 | 4 | 2 | 7 | 5 | 1 | 0 | 4 | 32:00 |
| 34 | Hoskins, Bobbi | 0 | 8 | 0 | 3 | 0 | 0 | 1 | 0 | 1 | 1 | 0 | 1 | 2 | 0 | 1 | 13:14 |
| 05 | Dinsmore, Dawn | 2 | 3 | 0 | 0 | 0 | 0 | 0 | 1 | 1 | 2 | 4 | 0 | 0 | 0 | 0 | 10:38 |
| 42 | Smith, Shannon | 4 | 8 | 0 | 0 | 6 | 8 | 3 | 1 | 4 | 0 | 14 | 1 | 2 | 0 | 1 | 20:01 |
| 30 | Burns, Beth | 0 | 0 | 0 | 0 | 0 | 0 | 0 | 0 | 0 | 0 | 0 | 0 | 0 | 0 | 0 | 0:9 |
| TEAM REBOUNDS (INCLUDED IN TOTALS) | | | | | | | | 2 | 1 | 3 | | | | | | | |
| TOTALS | | 17 | 51 | 2 | 9 | 11 | 21 | 17 | 16 | 33 | 16 | 47 | 10 | 8 | 2 | 9 | 160 |

TOTAL FG 1st HALF 6/12 50.0% 2nd HALF 11/39 28.2% GAME 17/ 51 33.3% DEADBALL
 3-POINT FG 1st HALF 1/ 2 50.0% 2nd HALF 1/ 7 14.3% GAME 2/ 9 22.2% REBOUNDS 6
 FREE THROWS 1st HALF 0/ 0 0.0% 2nd HALF 11/21 52.4% GAME 11/ 21 52.4%

HOME (Last Name, First)

| NO. | LAUREL COUNTY | Tot FG | | 3-POINT | | FT | FTA | Rebounds | | | PF | TP | A | TO | BLK | S | TIME |
|------------------------------------|-----------------|--------|-----|---------|-----|----|-----|----------|-----|-----|----|----|---|----|-----|---|-------|
| | | FG | FGA | FG | FGA | | | OFF | DEF | TOT | | | | | | | |
| 25 | Minor, Dee | 2 | 8 | 1 | 3 | 0 | 0 | 0 | 2 | 2 | 2 | 5 | 2 | 0 | 0 | 0 | 30:53 |
| 32 | Isaacs, Julie | 3 | 6 | 0 | 0 | 4 | 6 | 2 | 2 | 4 | 2 | 10 | 0 | 2 | 0 | 0 | 32:00 |
| 34 | Steele, Joy | 4 | 7 | 0 | 0 | 2 | 2 | 3 | 4 | 7 | 5 | 10 | 0 | 3 | 1 | 0 | 28:24 |
| 04 | Reed, Stacy | 6 | 16 | 3 | 6 | 2 | 4 | 1 | 5 | 6 | 4 | 17 | 1 | 6 | 2 | 2 | 31:06 |
| 22 | Goforth, Steph. | 0 | 1 | 0 | 0 | 5 | 10 | 1 | 6 | 7 | 1 | 5 | 4 | 3 | 0 | 0 | 24:18 |
| 12 | Collett, Steph. | 1 | 2 | 0 | 0 | 1 | 1 | 1 | 1 | 2 | 0 | 3 | 0 | 0 | 0 | 1 | 12:13 |
| 44 | Tate, Melissa | 0 | 0 | 0 | 0 | 0 | 0 | 0 | 0 | 0 | 2 | 0 | 0 | 0 | 0 | 0 | 1:06 |
| TEAM REBOUNDS (INCLUDED IN TOTALS) | | | | | | | | 3 | 2 | 5 | | | | | | | |
| TOTALS | | 16 | 40 | 4 | 9 | 14 | 23 | 11 | 22 | 33 | 16 | 50 | 7 | 14 | 3 | 3 | 160 |

TOTAL FG 1st HALF 5/11 45.5% 2nd HALF 11/29 37.9% GAME 16/ 40 40.0% DEADBALL
 3-POINT FG 1st HALF 2/ 3 66.7% 2nd HALF 2/ 6 33.3% GAME 4/ 9 44.4% REBOUNDS 5
 FREE THROWS 1st HALF 3/ 3 100.0% 2nd HALF 11/20 55.0% GAME 14/ 23 60.9%

OFFICIALS: Glenn Brown, Melvin Perkins, C. Stovall-Alt.

SCORE BY PERIODS

Technical: None

| | | | | | | |
|---------------|----|----|----|----|---|----|
| CLAY COUNTY | 13 | 9 | 12 | 13 | = | 47 |
| LAUREL COUNTY | 15 | 10 | 13 | 12 | = | 50 |

Attendance: 3,650

COMMENTS: POINTS OFF TURNOVERS

CLAY COUNTY 11 LAUREL COUNTY

SECOND CHANCE POINTS

5 CLAY COUNTY 14 LAUREL COUNTY

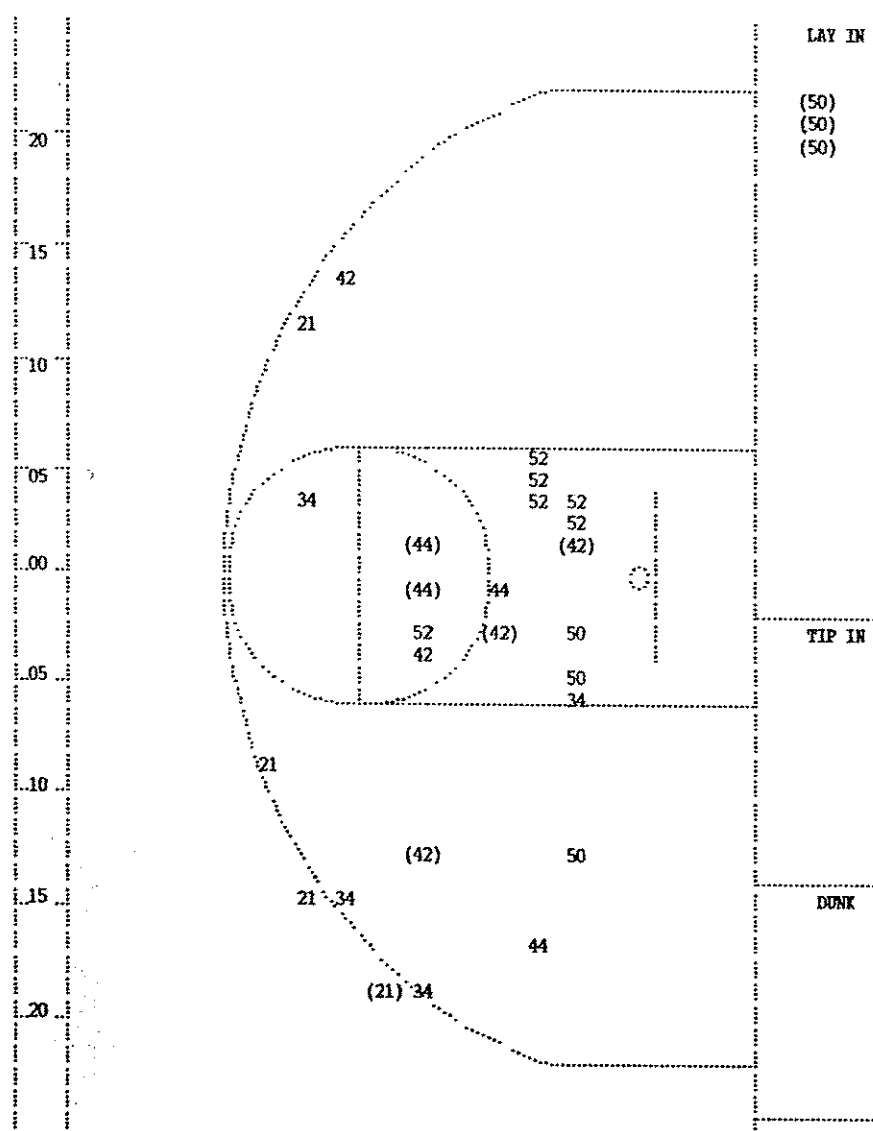
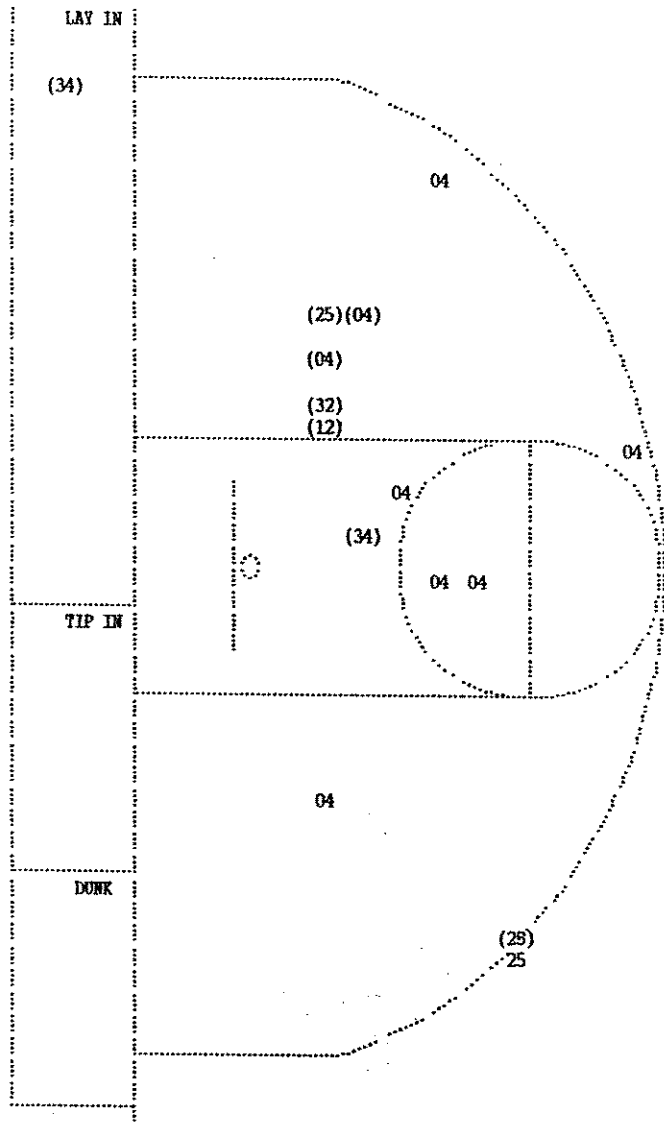
| Player | Team | LAUREL COUNTY | Time | Score | CLAY COUNTY | Player | Team |
|--------|-------|--------------------------------------------------------------------|----------------------------------------------------|---------|-------------------------------------------------------------------|---------------------------------------------------------------------|--------------------------|
| | | | 4 :15.1 | 49-47* | Layup Alley Oop by Jackson, Vonda , made Assist by Dinsmore, Jen. | 1-2 1 | 50.0% 5-11 45.4% 2 |
| | | REB: 5 A: 0 BLK: 0 TO: 3 PF: 5 S: 1 FT: 5-7 71.4% FG: 3-7 42.8% | 4 :13.9 | | | REB: 7 A: 2 BLK: 0 TO: 2 PF: 4 S: 1 FT: 3-7 42.8% FG: 5-11 45.4% | |
| | | | 4 :09.1 | | Foul on Brumley, Tonya | 1 | 5 |
| | | | 4 :09.1 | | Sub In: Burns, Beth Out: Brumley, Tonya | | |
| 4-6 | 66.6% | 6-9 66.6% | Goforth, Steph., 2 Free Throws made 1st missed 2nd | 4 :09.1 | *50-47 | | |
| | | REB: 5 A: 0 BLK: 0 TO: 3 PF: 5 S: 1 FT: 6-9 66.6% FG: 3-7 42.8% | 4 :09.1 | | | REB: 7 A: 2 BLK: 0 TO: 2 PF: 5 S: 1 FT: 3-7 42.8% FG: 5-11 45.4% | |
| | | No. 2 LAUREL COUNTY | T I M E - O U T | | | | |
| | | | 4 :08.8 | | Rebound by Jackson, Vonda | D-1 | Tot-2 D-3 Tot-8 |
| | | | 4 :00.1 | | 3 pt 21 ft Right Side Jump shot by Hoskins, Bobbi , missed | 0-2 | 00.0% 5-12 41.6% |
| D-1 | Tot-1 | D-4 Tot-6 | Rebound by Isaacs, Julie | 4 :00.1 | | | |

FINAL III - A Product of L E X I C O N S P O R T S
 (C) Copyright Davies & Associates, Inc.
 All Rights Reserved

| Player | Team | LAUREL COUNTY | Time | Score | CLAY COUNTY | Player | Team |
|----------------------------------------------------------------------|-------|--------------------------------------------------------------------|----------------------------------------------------|-------------------------------------------------|------------------------------------------------------------------------------------------------------|--------|------------------|
| Collett, Steph., Reed, Stacy, Minor, Dee, Isaacs, Julie, Steele, Joy | | | | | Dinsmore, Jen., Smith, Shannon, Howard, Angela, Brumley, Tonya, Jackson, Vonda Ball to Tigerettes | | |
| 1 | 1 | Foul on Steele, Joy | 4 7:36 | | | | |
| 1-1 | 100% | 1-1 100% | 13 ft Right Side Jump shot by Reed, Stacy | 4 7:36 38-35* | Dinsmore, Jen., 2 Free Throws made 1st missed 2nd | 1-2 | 50.0% 1-2 50.0% |
| 1-1 | 100% | 2-3 66.6% | Follow Layup by Steele, Joy | 4 7:22 *40-35 | | | |
| | | | 4 6:38 *42-35 | | | | |
| | | REB: 3 A: 0 BLK: 0 TO: 0 PF: 1 S: 0 FT: 0-0 00.0% FG: 2-3 66.6% | 4 6:34 | | REB: 0 A: 0 BLK: 0 TO: 0 PF: 0 S: 0 FT: 1-2 50.0% FG: 0-1 00.0% | | |
| | | | T I M E - O U T | CLAY COUNTY No. 1 | | | |
| 2 | 2 | Foul on Steele, Joy | 4 6:23 42-37* | 10 ft Lane Driving by Howard, Angela | | 1-2 | 50.0% 1-2 50.0% |
| 1 | 1 | Player Control Foul Steele, Joy | 4 6:11 | | | | |
| | | | 4 6:11 | | | | |
| | | | 4 5:59 42-39* | 16 ft Right Side Jump shot by Smith, Shannon | | 1-1 | 100% 2-3 66.6% |
| | | | | Assist by Howard, Angela | | 1 | 1 |
| 3 | 3 | Foul on Steele, Joy | 4 5:25 | | | | |
| 1-1 | 100% | 3-6 50.0% | 8 ft Right Side Jump shot by Collett, Steph. | 4 5:25 42-40* | Smith, Shannon, 2 Free Throws made 1st missed 2nd | 1-2 | 50.0% 2-4 50.0% |
| | | | | 4 4:55 *44-40 | | | |
| 1-1 | 100% | 1-1 100% | Collett, Steph., 1 Free Throw made | 4 4:54 | Foul on Dinsmore, Jen. | 1 | 1 |
| | | | | 4 4:54 *45-40 | | | |
| 2 | 2 | Traveling Violation on Steele, Joy | 4 4:40 45-42* | 6 ft Lane Follow by Smith, Shannon | | 2-3 | 66.6% 3-6 50.0% |
| | | | 4 3:31 | | | | |
| | | | 4 3:31 | Sub In: Hoskins, Bobbi Out: Smith, Shannon | | | |
| | | | 4 3:11 | 10 Second Backcourt Violation on Jackson, Vonda | | 1 | 1 |
| | | | 4 3:11 | | | | |
| 1-2 | 50.0% | 2-3 66.6% | Reed, Stacy, 2 Free Throws made 1st missed 2nd | 4 2:58 | Foul on Hoskins, Bobbi | 1 | 2 |
| 0-1 | Tot-2 | 0-2 Tot-4 | Rebound by TEAM | 4 2:58 *46-42 | Sub In: Smith, Shannon Out: Hoskins, Bobbi | | |
| 1-5 | 20.0% | 3-7 42.8% | 8 ft Lane Jump shot by Reed, Stacy, missed | 4 2:57 | | | |
| | | | | 4 2:43 | | | |
| | | | | 4 2:41 | Rebound by Brumley, Tonya | D-1 | Tot-1 D-2 Tot-6 |
| 4 | 4 | Foul on Steele, Joy | 4 2:30 46-44* | 10 ft Lane Jump shot by Howard, Angela, made | | 2-3 | 66.6% 4-9 44.4% |
| | | | | 4 2:30 | | | |
| | | | | 4 2:30 | | | |
| | | REB: 4 A: 0 BLK: 0 TO: 2 PF: 4 S: 0 FT: 2-3 66.6% FG: 3-7 42.8% | 4 2:30 | No. 1 LAUREL COUNTY | REB: 6 A: 1 BLK: 0 TO: 1 PF: 2 S: 0 FT: 2-4 50.0% FG: 4-9 44.4% | | |
| | | | T I M E - O U T | CLAY COUNTY No. 2 | | | |
| D-1 | Tot-2 | D-3 Tot-5 | Rebound by Collett, Steph. | 4 2:30 | Howard, Angela, 1 Free Throw missed | 0-1 | 00.0% 2-5 40.0% |
| | | | | 4 2:29 | | | |
| | | | | 4 1:19 | Foul on Howard, Angela | 1 | 3 |
| | | | | 4 1:19 | | | |
| | | REB: 5 A: 0 BLK: 0 TO: 2 PF: 4 S: 0 FT: 2-3 66.6% FG: 3-7 42.8% | 4 1:19 | T I M E - O U T | REB: 6 A: 1 BLK: 0 TO: 1 PF: 3 S: 0 FT: 2-5 40.0% FG: 4-9 44.4% | | |
| | | | | CLAY COUNTY No. 2 | | | |
| 2-2 | 100% | 4-5 80.0% | Goforth, Steph., 2 Free Throws made both | 4 1:19 *48-44 | | | |
| | | | | 4 1:03 | 6 ft Lane Jump shot by Howard, Angela, missed | 2-4 | 50.0% 4-10 40.0% |
| | | | | 4 1:02 | Rebound by Brumley, Tonya | 0-1 | Tot-2 0-5 Tot-7 |
| 1 | 5 | Foul on Reed, Stacy | 4 1:01 | | | | |
| | | | | 4 1:01 48-45* | Brumley, Tonya, 2 Free Throws missed 1st made 2nd | 1-2 | 50.0% 3-7 42.8% |
| | | | | 4 :45.7 | Steal by Dinsmore, Jen. | 1 | 1 |
| 1 | 3 | Dribbling Error on Reed, Stacy | 4 :44.7 | | | | |
| 1 | 1 | Steal by Collett, Steph. | 4 :26.3 | | | | |
| | | | | 4 :24.8 | Dribbling Error on Smith, Shannon | 1 | 2 |
| | | | | 4 :22.9 | Foul on Howard, Angela | 2 | 4 |
| | | | | 4 :22.9 | Sub In: Hoskins, Bobbi Out: Howard, Angela | | |
| 3-4 | 75.0% | 5-7 71.4% | Goforth, Steph., 2 Free Throws missed 1st made 2nd | 4 :22.9 *49-45 | | | |

| Player | Team | LAUREL COUNTY | Time | Score | CLAY COUNTY | Player | Team |
|------------------------------------------------------------------------------------------------|-------|---------------------------------------------------------------------------|---------|--------|--------------------------------------------------------------------------------|--------|------------------|
| Minor, Dee, Isaacs, Julie, Steele, Joy, Reed, Stacy, Goforth, Steph. Ball to Lady Cardinals | | | | | Howard, Angela, Brumley, Tonya, Jackson, Vonda, Dinsmore, Jen., Hoskins, Bobbi | | |
| 1 | 1 | Bad Pass by Goforth, Steph. | 3 7:40 | | Steal by Dinsmore, Jen. | 1 | 1 |
| 1-1 | 100% | 1-1 100% | 3 7:39 | 25-24* | | | |
| 1 | 1 | 3 pt 20 ft Left Side Jump shot by Minor, Dee Assist by Goforth, Steph. | 3 7:22 | | Follow Layup by Jackson, Vonda | 1-2 | 50.0% 1-5 20.0% |
| 0-2 | 00.0% | 0-2 00.0% | 3 7:00 | *28-24 | | | |
| | | Goforth, Steph., 2 Free Throws missed both | 3 6:12 | | Foul on Howard, Angela | 1 | 1 |
| 1 | 2 | Out-of-Bounds by Steele, Joy | 3 6:12 | | | | |
| 1 | 1 | Foul on Reed, Stacy | 3 6:01 | | Foul on Brumley, Tonya | 1 | 2 |
| | | | 3 5:52 | | | | |
| 1-2 | 50.0% | 1-4 25.0% | 3 5:36 | 28-27* | 3 pt 22 ft Right Side Jump shot by Dinsmore, Jen. Assist by Hoskins, Bobbi | 1-1 | 100% 2-8 25.0% |
| 1-1 | 100% | 2-3 66.6% | 3 5:17 | *29-27 | Foul on Howard, Angela | 1 | 1 |
| 1 | 2 | 8 ft Right Side Turnaround by Isaacs, Julie Assist by Reed, Stacy | 3 5:17 | | | 2 | 3 |
| | | | 3 4:48 | *31-27 | | | |
| 1-1 | 100% | 2-5 40.0% | 3 4:47 | | Foul on Jackson, Vonda | 1 | 4 |
| | | Isaacs, Julie, 1 Free Throw made | 3 4:47 | | Sub In: Smith, Shannon Out: Hoskins, Bobbi | | |
| 1 | 3 | Dribbling Error on Reed, Stacy | 3 4:47 | *32-27 | | | |
| 1 | 2 | Foul on Goforth, Steph. | 3 4:26 | 32-29* | Follow Layup by Jackson, Vonda | 2-3 | 66.6% 3-11 27.2% |
| 1-1 | 100% | 3-5 60.0% | 3 3:39 | | Steal by Smith, Shannon | 1 | 2 |
| | | 4 ft Lane Bank by Steele, Joy | 3 3:38 | | | | |
| 2 | 4 | Dribbling Error on Reed, Stacy | 3 3:37 | 32-30* | Smith, Shannon, 2 Free Throws missed 1st made 2nd | 1-2 | 50.0% 1-2 50.0% |
| 1-3 | 33.3% | 2-7 28.5% | 3 3:19 | *34-30 | | | |
| 1 | 3 | Isaacs, Julie, 2 Free Throws missed both Foul on Isaacs, Julie | 3 2:56 | | Steal by Dinsmore, Jen. | 2 | 3 |
| 2-3 | 66.6% | 4-7 57.1% | 3 2:55 | | | | |
| | | 12 ft Right Side Jump shot by Minor, Dee Foul on Reed, Stacy | 3 2:27 | | Foul on Jackson, Vonda | 2 | 5 |
| 1-3 | 33.3% | 5-8 62.5% | 3 2:27 | | Sub In: Dinsmore, Dawn Out: Jackson, Vonda | | |
| | | 10 ft Right Side Jump shot by Reed, Stacy | 3 2:16 | 34-32* | Smith, Shannon, 2 Free Throws made both | 3-4 | 75.0% 3-4 75.0% |
| 2 | 4 | | 3 2:03 | *36-32 | | | |
| 1-3 | 33.3% | 5-8 62.5% | 3 1:40 | | | | |
| | | Bad Pass by Isaacs, Julie Sub In: Collett, Steph. Out: Reed, Stacy | 3 1:36 | 36-34* | 3 ft Lane Driving by Smith, Shannon Assist by Howard, Angela | 1-2 | 50.0% 4-15 26.6% |
| | | | 3 1:21 | *38-34 | | 1 | 2 |
| 2 | 6 | Bad Pass by Isaacs, Julie | 3 :53.2 | | Foul on Howard, Angela | 3 | 6 |
| | | | 3 :53.2 | | Sub In: Hoskins, Bobbi Out: Howard, Angela | | |
| | | | 3 :53.4 | | Steal by Brumley, Tonya | 1 | 4 |
| | | | 3 :50.9 | | | | |
| | | | 3 :40.6 | | | | |
| | | | 3 :29.2 | | Out-of-Bounds by Dinsmore, Jen. | 1 | 1 |
| | | | 3 :00.1 | | Steal by Brumley, Tonya | 2 | 5 |
| | | | 3 :00.1 | | | | |

SECOND HALF SHOT CHART Produced by the University of Kentucky Stat Crew with FINAL III - a Product of LEXICON SPORTS™



| LAUREL COUNTY | | Player | | Player | |
|-----------------|--------|----------|-----------------|------------|--------|
| 25 - Minor, Dee | 2 / 3 | 66.6% | 34 - Steele, Jo | 2 / 2 | 100.0% |
| 32 - Isaacs, Ju | 1 / 1 | 100.0% | 04 - Reed, Stac | 2 / 8 | 25.0% |
| 34 - Steele, Jo | 2 / 2 | 100.0% | 12 - Collett, S | 1 / 1 | 100.0% |
| 04 - Reed, Stac | 2 / 8 | 25.0% | | | |
| 12 - Collett, S | 1 / 1 | 100.0% | | | |
| Layups | 1-9 Ft | 10-15 Ft | Over 15 Ft | 3 Pointers | Total |
| 1 / 1 | 3 / 5 | 3 / 5 | 1 / 4 | 8 / 15 | |
| 100.0% | 60.0% | 60.0% | 25.0% | 53.3% | |

| CLAY COUNTY | | Player | | Player | |
|------------------|--------|----------|-----------------|------------|--------|
| 44 - Howard, An | 2 / 4 | 50.0% | 42 - Smith, Sha | 3 / 5 | 60.0% |
| 52 - Brunley, T | 0 / 6 | 0.0% | | | |
| 50 - Jackson, V | 3 / 6 | 50.0% | | | |
| 21 - Dinsmore, I | 1 / 4 | 25.0% | | | |
| 34 - Hoskins, E | 0 / 4 | 0.0% | | | |
| Layups | 1-9 Ft | 10-15 Ft | Over 15 Ft | 3 Pointers | Total |
| 3 / 3 | 2 / 11 | 2 / 5 | 1 / 4 | 1 / 6 | 9 / 29 |
| 100.0% | 18.2% | 40.0% | 25.0% | 16.7% | 31.0% |

OFFICIAL NCAA BASKETBALL BOX SCORE: * OFFICIAL FIRST HALF *
 Date: 03-22-91 Site: Frankfort, Ky.

VISITORS (Last Name, First)

| NO. | CLAY COUNTY | Tot FG | | 3-POINT | | FT | FTA | Rebounds | | | PF | TP | A | TO | BLK | S | TIME |
|------------------------------------|----------------|--------|-----|---------|-----|----|-----|----------|-----|-----|----|----|---|----|-----|---|-------|
| | | FG | FGA | FG | FGA | | | OFF | DEF | TOT | | | | | | | |
| 44 | Howard, Angela | 1 | 1 | 0 | 0 | 1 | 2 | 0 | 2 | 2 | 0 | 3 | 0 | 2 | 0 | 0 | 16:00 |
| 52 | Brumley, Tonya | 2 | 5 | 0 | 0 | 1 | 4 | 3 | 4 | 7 | 0 | 5 | 1 | 0 | 1 | 1 | 16:00 |
| 50 | Jackson, Vonda | 1 | 3 | 0 | 0 | 1 | 2 | 1 | 0 | 1 | 2 | 3 | 0 | 0 | 1 | 0 | 7:49 |
| 21 | Dinsmore, Jen. | 1 | 3 | 1 | 2 | 0 | 0 | 0 | 1 | 1 | 1 | 3 | 4 | 0 | 0 | 1 | 16:00 |
| 34 | Hoskins, Bobbi | 0 | 4 | 0 | 1 | 0 | 0 | 0 | 0 | 0 | 0 | 0 | 0 | 2 | 0 | 1 | 8:13 |
| 05 | Dinsmore, Dawn | 2 | 3 | 0 | 0 | 0 | 0 | 0 | 1 | 1 | 2 | 4 | 0 | 0 | 0 | 0 | 8:11 |
| 42 | Smith, Shannon | 1 | 3 | 0 | 0 | 2 | 2 | 1 | 1 | 2 | 0 | 4 | 1 | 1 | 0 | 0 | 7:47 |
| TEAM REBOUNDS (INCLUDED IN TOTALS) | | | | | | | | 1 | 1 | 2 | | | | | | | |
| TOTALS | | 8 | 22 | 1 | 3 | 5 | 10 | 6 | 10 | 16 | 5 | 22 | 6 | 5 | 2 | 3 | 80 |

TOTAL FG 1st HALF 6/12 50.0% 2nd HALF 2/10 20.0% GAME 8/ 22 36.4% DEADBALL
 3-POINT FG 1st HALF 1/ 2 50.0% 2nd HALF 0/ 1 0.0% GAME 1/ 3 33.3% REBOUNDS 4
 FREE THROWS 1st HALF 0/ 0 0.0% 2nd HALF 5/10 50.0% GAME 5/ 10 50.0%

HOME (Last Name, First)

| NO. | LAUREL COUNTY | Tot FG | | 3-POINT | | FT | FTA | Rebounds | | | PF | TP | A | TO | BLK | S | TIME |
|------------------------------------|-----------------|--------|-----|---------|-----|----|-----|----------|-----|-----|----|----|---|----|-----|---|-------|
| | | FG | FGA | FG | FGA | | | OFF | DEF | TOT | | | | | | | |
| 25 | Minor, Dee | 0 | 5 | 0 | 1 | 0 | 0 | 0 | 1 | 1 | 2 | 0 | 2 | 0 | 0 | 0 | 14:53 |
| 32 | Isaacs, Julie | 2 | 5 | 0 | 0 | 3 | 3 | 1 | 1 | 2 | 1 | 7 | 0 | 0 | 0 | 0 | 16:00 |
| 34 | Steele, Joy | 2 | 5 | 0 | 0 | 2 | 2 | 2 | 2 | 4 | 1 | 6 | 0 | 0 | 0 | 0 | 14:54 |
| 04 | Reed, Stacy | 4 | 8 | 3 | 4 | 0 | 0 | 1 | 3 | 4 | 1 | 11 | 0 | 3 | 2 | 2 | 15:46 |
| 22 | Goforth, Steph. | 0 | 1 | 0 | 0 | 1 | 2 | 0 | 3 | 3 | 0 | 1 | 3 | 2 | 0 | 0 | 13:07 |
| 12 | Collett, Steph. | 0 | 1 | 0 | 0 | 0 | 0 | 0 | 0 | 0 | 0 | 0 | 0 | 0 | 0 | 0 | 4:14 |
| 44 | Tate, Melissa | 0 | 0 | 0 | 0 | 0 | 0 | 0 | 0 | 0 | 2 | 0 | 0 | 0 | 0 | 0 | 1:06 |
| TEAM REBOUNDS (INCLUDED IN TOTALS) | | | | | | | | 2 | | 2 | | | | | | | |
| TOTALS | | 8 | 25 | 3 | 5 | 6 | 7 | 6 | 10 | 16 | 7 | 25 | 5 | 5 | 2 | 2 | 80 |

TOTAL FG 1st HALF 5/11 45.5% 2nd HALF 3/14 21.4% GAME 8/ 25 32.0% DEADBALL
 3-POINT FG 1st HALF 2/ 3 66.7% 2nd HALF 1/ 2 50.0% GAME 3/ 5 60.0% REBOUNDS 1
 FREE THROWS 1st HALF 3/ 3 100.0% 2nd HALF 3/ 4 75.0% GAME 6/ 7 85.7%

OFFICIALS: Glenn Brown, Melvin Perkins, C. Stovall-Alt.

SCORE BY PERIODS

Technical: None

CLAY COUNTY 13 9 = 22
 LAUREL COUNTY 15 10 = 25

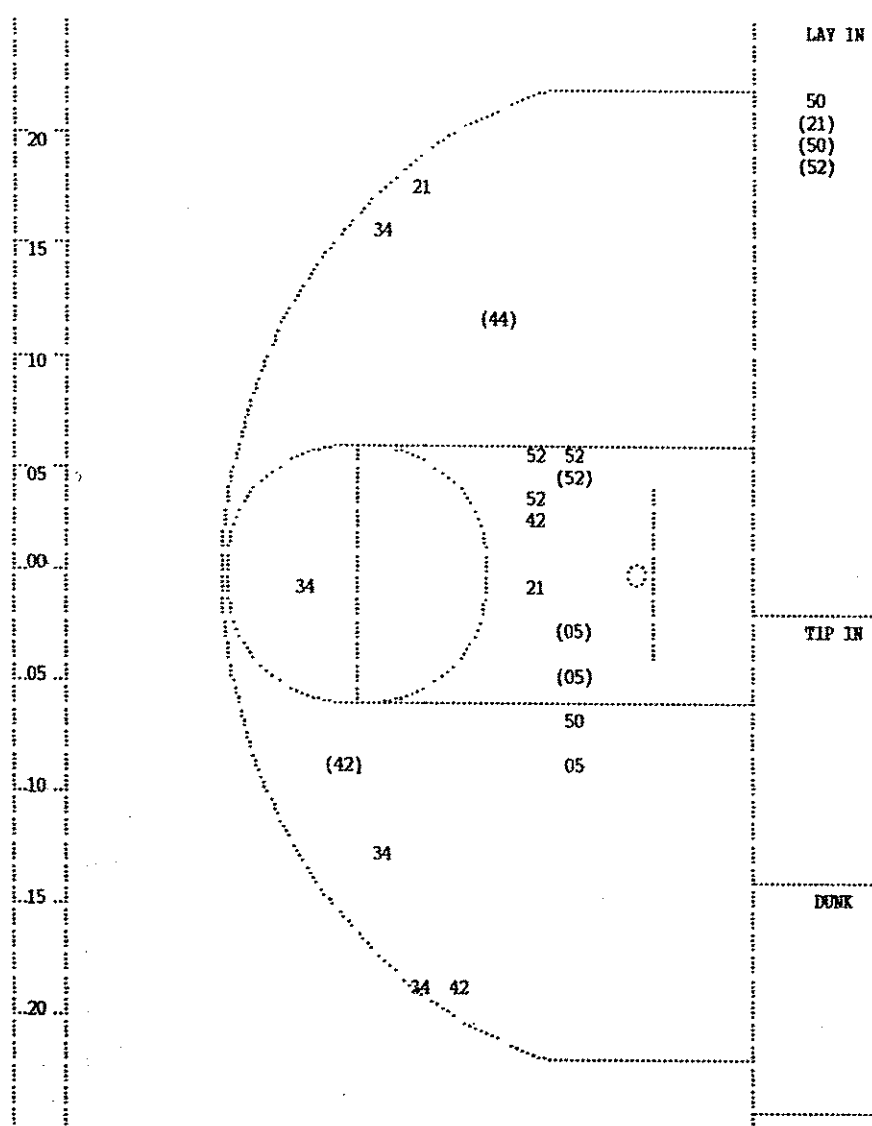
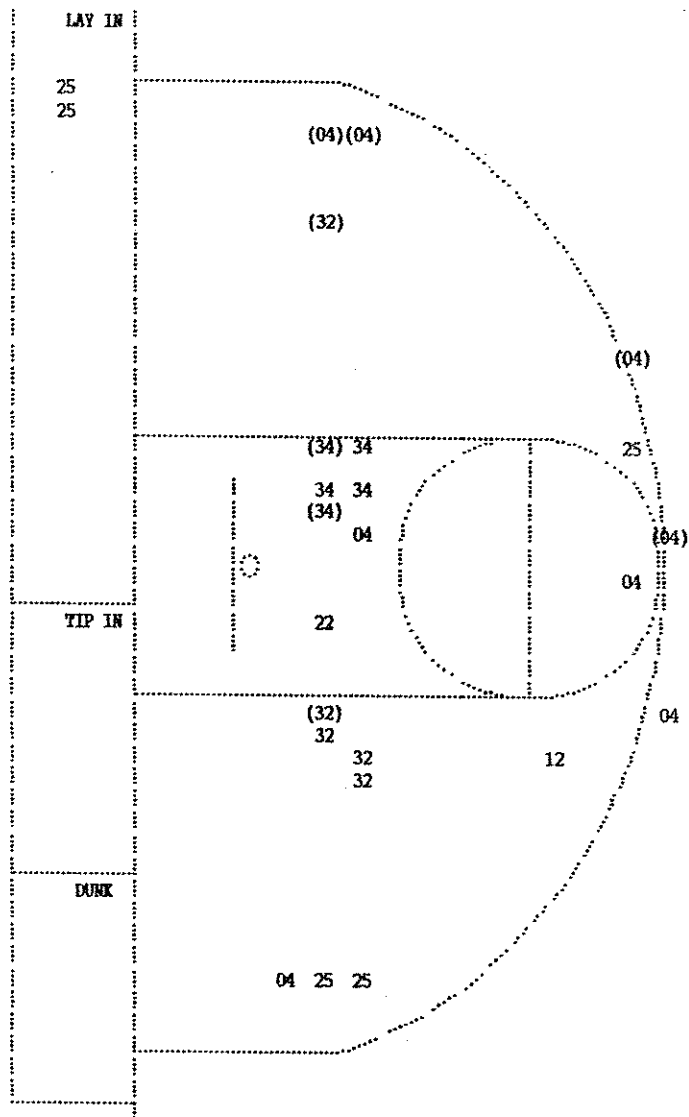
Attendance:

| COMMENTS: | POINTS OFF TURNOVERS | SECOND CHANCE POINTS |
|-------------|----------------------|----------------------|
| CLAY COUNTY | 2 LAUREL COUNTY | 6 LAUREL COUNTY |
| | 3 CLAY COUNTY | |

| Player | Team | LAUREL COUNTY | Time | Score | CLAY COUNTY | Player | Team |
|----------------------------------------------------------------------------|-------|------------------------------------------|------------------------------------------------------------------------------------------------------|---------|----------------------------------------------------------|--------|------------------|
| Isaacs, Julie, Collett, Steph., Goforth, Steph., Minor, Dee, Tate, Melissa | | | Smith, Shannon, Jackson, Vonda, Brumley, Tonya, Howard, Angela, Dinsmore, Jen. Ball to Tigerettes | | | | |
| 1 | 1 | Foul on Tate, Melissa | 2 7:46 | | | | |
| | | Sub In: Reed, Stacy Out: Collett, Steph. | 2 7:46 | 15-14* | Smith, Shannon, 1 Free Throw made | 1-1 | 100% 1-1 100% |
| | | | 2 7:45 | 15-15* | Smith, Shannon, 1 Free Throw made | 2-2 | 100% 2-2 100% |
| 1 | 1 | Out-of-Bounds by Goforth, Steph. | 2 7:45 | | | | |
| 1 | 1 | Steal by Reed, Stacy | 2 7:42 | | | | |
| 2 | 2 | Foul on Tate, Melissa | 2 7:41 | | Bad Pass by Howard, Angela | 1 | 1 |
| | | Sub In: Steele, Joy Out: Tate, Melissa | 2 6:54 | | | | |
| | | | 2 6:54 | | | | |
| 1-2 | 50.0% | 1-3 33.3% | 16 ft Right Side Jump shot by Isaacs, Julie | 2 6:54 | 15-16* Jackson, Vonda, 2 Free Throws missed 1st made 2nd | 1-2 | 50.0% 3-4 75.0% |
| 1 | 1 | Assist by Goforth, Steph. | 2 6:44 | *17-16 | | | |
| 1 | 3 | Foul on Steele, Joy | 2 6:23 | | | | |
| | | | 2 6:23 | 17-17* | Brumley, Tonya, 2 Free Throws made 1st missed 2nd | 1-2 | 50.0% 4-6 66.6% |
| | | | 2 6:00 | | Traveling Violation on Smith, Shannon | 1 | 2 |
| | | | 2 5:59 | | Sub In: Hoskins, Bobbi Out: Smith, Shannon | | |
| | | | 2 5:37 | | Foul on Dinsmore, Jen. | 1 | 1 |
| 1-2 | 50.0% | 1-2 50.0% | Goforth, Steph., 2 Free Throws missed 1st made 2nd | 2 5:37 | *18-17 | | |
| | | | Sub In: Collett, Steph. Out: Goforth, Steph. | 2 5:37 | | | |
| | | | | 2 5:21 | Traveling Violation on Hoskins, Bobbi | 1 | 3 |
| 1 | 4 | Foul on Isaacs, Julie | 2 4:39 | | Sub In: Dinsmore, Dawn Out: Jackson, Vonda | | |
| | | | 2 4:35 | | | | |
| 2 | 2 | Steal by Reed, Stacy | 2 4:35 | | Brumley, Tonya, 2 Free Throws missed both | 1-4 | 25.0% 4-8 50.0% |
| | | | 2 4:34 | | | | |
| 1-3 | 33.3% | 2-9 22.2% | 3 pt 20 ft Right Side Jump shot by Reed, Stacy | 2 4:24 | Bad Pass by Howard, Angela | 2 | 4 |
| | | | Sub In: Goforth, Steph. Out: Collett, Steph. | 2 2:59 | *21-17 | | |
| | | | | 2 2:44 | Dribbling Error on Hoskins, Bobbi | 2 | 5 |
| | | | | 2 2:44 | | | |
| | | | | 2 2:44 | Sub In: Smith, Shannon Out: Hoskins, Bobbi | | |
| 2-2 | 100% | 3-4 75.0% | Isaacs, Julie, 2 Free Throws made both | 2 2:31 | Foul on Dinsmore, Dawn | 1 | 2 |
| | | | | 2 2:31 | *23-17 | | |
| 1 | 5 | Foul on Reed, Stacy | 2 2:11 | 23-19* | Turnaround Layup by Brumley, Tonya | 1-4 | 25.0% 1-8 12.5% |
| | | | 2 1:53 | | | | |
| 2-4 | 50.0% | 3-11 27.2% | 20 ft Right Side Jump shot by Reed, Stacy | 2 1:53 | 23-20* Howard, Angela, 2 Free Throws missed 1st made 2nd | 1-2 | 50.0% 5-10 50.0% |
| | | | | 2 1:24 | *25-20 | | |
| | | | | 2 :34.9 | 25-22* 6 ft Left Side Turnaround by Brumley, Tonya | 2-5 | 40.0% 2-10 20.0% |
| | | | | | Assist by Dinsmore, Jen. | 1 | 1 |
| 2-6 | 33.3% | 3-14 21.4% | 3 pt 21 ft Left Angle Jump shot by Reed, Stacy, missed | 2 :00.2 | | | |

| Player | Team | LAUREL COUNTY | Time | Score | CLAY COUNTY | Player | Team |
|---------------------------|------|-------------------------------------------------|---------|--------|--------------------------------------------------------------------------------|--------|-----------------|
| Minor, Dee, Isaacs, Julie | 1 | Steele, Joy, Reed, Stacy, Goforth, Steph. | | | Howard, Angela, Brumley, Tonya, Jackson, Vonda, Dinsmore, Jen., Hoskins, Bobbi | | |
| | | Ball to Lady Cardinals | | | | | |
| 1 | 1 | Turnover by Reed, Stacy | 1 7:24 | | | | |
| | | | 1 6:23 | 0-3* | 3 pt Shot by Dinsmore, Jen. | 1-1 | 100% 1-2 50.0% |
| | | | 1 6:06 | | Foul on Jackson, Vonda | 1 | 1 |
| | | | 1 6:01 | | Steal by Hoskins, Bobbi | 1 | 1 |
| 1 | 2 | Bad Pass by Goforth, Steph. | 1 5:59 | | | | |
| 1-1 100% 1-3 33.3% | | 3 pt 21 ft Right Angle Jump shot by Reed, Stacy | 1 5:34 | *3-3 | | | |
| | | | 1 5:07 | | Steal by Dinsmore, Jen. | 1 | 2 |
| 2 | 3 | Dribbling Error on Reed, Stacy | 1 5:05 | | | | |
| | | | 1 4:58 | 3-5* | Driving Layup by Jackson, Vonda | 1-3 | 33.3% 2-5 40.0% |
| | | | | | Assist by Dinsmore, Jen. | 1 | 1 |
| 1-1 100% 2-4 50.0% | | 6 ft Lane Jump shot by Steele, Joy | 1 4:44 | *5-5 | | | |
| 1 | 1 | Assist by Minor, Dee | | | | | |
| 2-2 100% 3-5 60.0% | | 3 pt 20 ft Circle Jump shot by Reed, Stacy | 1 4:18 | *8-5 | | | |
| 1 | 2 | Assist by Goforth, Steph. | | | | | |
| | | | 1 3:51 | 8-7* | 13 ft Left Side Jump shot by Howard, Angela | 1-1 | 100% 3-7 42.8% |
| | | | | | Assist by Brumley, Tonya | 1 | 2 |
| | | | 1 3:32 | | Foul on Jackson, Vonda | 2 | 2 |
| | | | 1 3:32 | | Sub In: Dinsmore, Dawn Out: Jackson, Vonda | | |
| 2-2 100% 2-2 100% | | Steele, Joy, 2 Free Throws made both | 1 3:32 | *10-7 | | | |
| 1 | 1 | Foul on Minor, Dee | 1 3:03 | | | | |
| | | | 1 3:02 | | Sub In: Smith, Shannon Out: Hoskins, Bobbi | | |
| | | | 1 3:02 | 10-9* | 16 ft Right Angle Jump shot by Smith, Shannon | 1-1 | 100% 4-8 50.0% |
| | | | | | Assist by Dinsmore, Jen. | 2 | 3 |
| | | | 1 2:28 | 10-11* | 4 ft Lane Turnaround by Dinsmore, Dawn | 1-1 | 100% 5-9 55.5% |
| | | | | | Assist by Dinsmore, Jen. | 3 | 4 |
| | | | 1 2:01 | | Steal by Brumley, Tonya | 1 | 3 |
| 1-1 100% 4-8 50.0% | | Bad Pass by Reed, Stacy | 1 2:00 | | | | |
| 2 | 3 | 6 ft Left Side Turnaround by Isaacs, Julie | 1 1:39 | *12-11 | | | |
| | | Assist by Minor, Dee | | | | | |
| | | | 1 1:39 | | Foul on Dinsmore, Dawn | 1 | 3 |
| 1-1 100% 3-3 100% | | Isaacs, Julie, 1 Free Throw made | 1 1:39 | *13-11 | | | |
| 2 | 2 | Foul on Minor, Dee | 1 1:07 | | | | |
| | | Sub In: Collett, Steph. Out: Minor, Dee | 1 1:07 | | | | |
| | | | 1 1:07 | 13-13* | 3 ft Lane Turnaround by Dinsmore, Dawn | 2-2 | 100% 6-11 54.5% |
| | | | | | Assist by Smith, Shannon | 1 | 5 |
| 2-3 66.6% 5-11 45.4% | | 4 ft Lane Turnaround by Steele, Joy | 1 :05.1 | *15-13 | | | |
| 2 | 4 | Assist by Goforth, Steph. | | | | | |

FIRST HALF SHOT CHART Produced by the University of Kentucky Stat Crew with FINAL III - a Product of LEXICON SPORTS™



| LAUREL COUNTY | | | | | |
|-----------------|--------|----------|-----------------|------------|--------|
| Player | | | Player | | Player |
| 25 - Minor, Dee | 0 / 5 | 0.0% | 12 - Collett, S | 0 / 1 | 0.0% |
| 32 - Isaacs, Ju | 2 / 5 | 40.0% | | | |
| 34 - Steele, Jo | 2 / 5 | 40.0% | | | |
| 04 - Reed, Stac | 4 / 8 | 50.0% | | | |
| 22 - Goforth, S | 0 / 1 | 0.0% | | | |
| Layups | 1-9 Ft | 10-15 Ft | Over 15 Ft | 3 Pointers | Total |
| 0 / 2 | 3 / 11 | | 2 / 8 | 3 / 4 | 8 / 25 |
| 0.0% | 27.3% | | 25.0% | 75.0% | 32.0% |

| CLAY COUNTY | | | | | |
|-----------------|--------|----------|-----------------|------------|--------|
| Player | | | Player | | Player |
| 44 - Howard, An | 1 / 1 | 100.0% | 05 - Dinsmore, | 2 / 3 | 66.6% |
| 52 - Brunley, T | 2 / 5 | 40.0% | 42 - Smith, Sha | 1 / 3 | 33.3% |
| 50 - Jackson, V | 1 / 3 | 33.3% | | | |
| 21 - Dinsmore, | 1 / 3 | 33.3% | | | |
| 34 - Hoskins, B | 0 / 4 | 0.0% | | | |
| Layups | 1-9 Ft | 10-15 Ft | Over 15 Ft | 3 Pointers | Total |
| 3 / 4 | 3 / 10 | 1 / 1 | 1 / 5 | 0 / 2 | 8 / 22 |
| 75.0% | 30.0% | 100.0% | 20.0% | 0.0% | 36.4% |